

Air Intake Emergency Shut-Off Valve

紧急进气关断阀



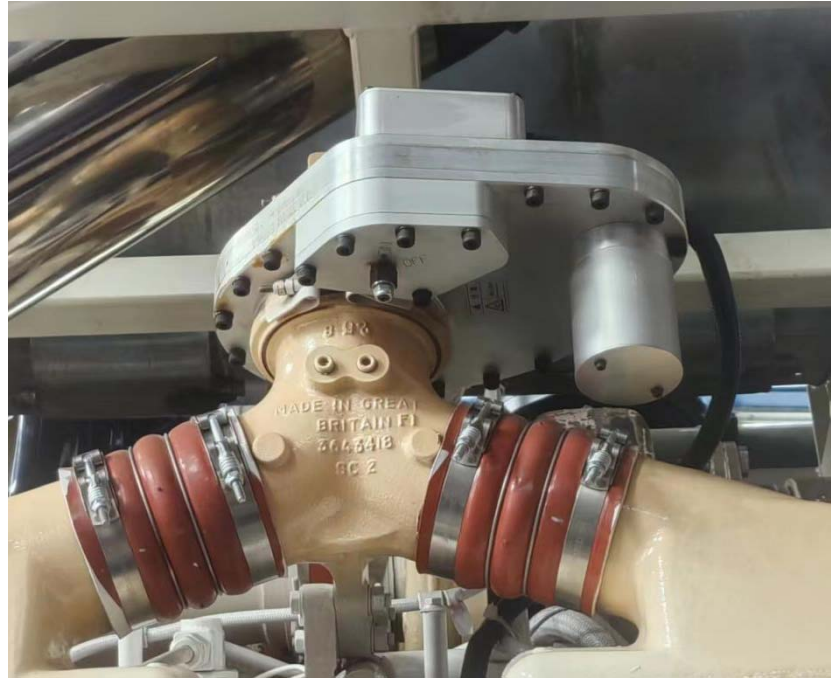
FZV Air Intake Emergency Shut-Off Valve

FZV 系列紧急进气关断阀

Features and Benefits

功能和优点

- **Reliable and safe emergency shutdown for diesel engines.**
紧急关停柴油发动机，安全可靠。
- **Special gate valve design..**
特殊的闸阀式设计。
- **High temperature design for challenging thermal applications.**
高温设计应对严格的高温环境。



Advantage 优点

- FELICIA Air Intake Emergency Shut-Off Valve is an electronically controlled emergency engine shutdown system which forces engine shutdown by blocking an engine's air intake path. It is available in an automatic engine speed sensing model where shutdown occurs if engine speed exceeds a pre-set speed (or by manual override). FELICIA 紧急进气关断阀是一种阻断发动机进气迫使发动机停机的电控式紧急关断系统。当发动机超速或超过预设转速（或人为操控），关断阀自动关闭。



雨凡机械科技（上海）有限公司

Yufan Machinery Technology(Shanghai) Co., Ltd.

地址: 上海市青浦区新金路 123 号 F 栋 2 楼 邮编: 201700

Mobile: +86-18817887163 Tel: +86-21-59283219

Fax: +86-21-69767217 E-mail: mike@yfstart.com

Air Intake Emergency Shut-Off Valve

紧急进气关断阀



FSV Air Intake Emergency Shut-Off Valve

FSV 系列紧急进气关断阀

Features and Benefits

功能和优点

- **Reliable and safe emergency shutdown for diesel engines.**
紧急关停柴油发动机，安全可靠。
- **Operator friendly automatic operation with manual reset and override.**
人工复位，操作友好。



Advantage 优点

- FELICIA Air Intake Emergency Shut-Off Valve is an electronically controlled emergency engine shutdown system which forces engine shutdown by blocking an engine's air intake path. It is available in an automatic engine speed sensing model where shutdown occurs if engine speed exceeds a pre-set speed (or by manual override). Alternatively, a manual activation only configuration is available where an operator or external input will activate emergency engine shut-down.

FELICIA 紧急进气关断阀是一种阻断发动机进气迫使发动机停机的电控式紧急关断系统。当发动机超速或超过预设转速（或人为操控），关断阀自动关闭。阀关闭后，需手动复位打开。

Air Intake Emergency Shut-Off Valve

紧急进气关断阀

Application Examples 应用案例

Bulk Haulers	Tankers	Power Generators	Drilling Rigs
Grain Processing Plants	Cranes	Forklifts	Work Boats
Refinery Processing	Vehicles	Underground Equipment	Barges
Fueling Vehicles	Tow Vehicles	Support Vehicles	Welders
Pump Trucks	Fire Trucks	Vacuum Trucks	Lighting Trucks
Lighting Units	Frac Trucks		

Especially used for petroleum and chemical industries where there may have flammable gas.
特别适用于石油化工等存在可燃气体的场合。

FZV series specifications

FZV 系列性能参数

Valve 阀参数	
Maximum Inlet Boost Air Pressure(gauge) 最大增压进气压力（表压）：	5bar [72.5 psig]
Continuous Inlet Air Temperature 连续进气温度	-55°C to +200°C [-67°F to +392°F]
Ambient Temperature Range 环境温度范围	-20°C to +120°C[-4°F to +248°F]
Resting Position 静止位置	Valve open 阀打开
Activated Position 激活位置	Valve closed 阀关闭
Protection grade 防护等级	IP 69K
Insulation resistance 绝缘电阻	≥220 MΩ（250V DC）

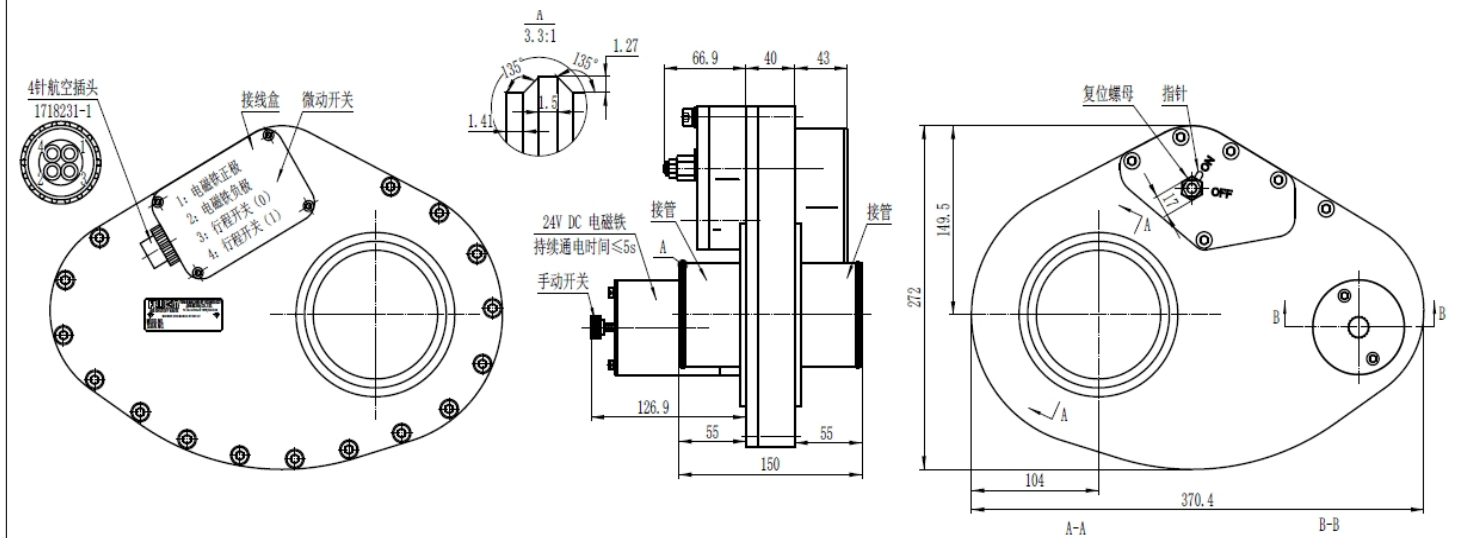


雨凡机械科技（上海）有限公司
Yufan Machinery Technology(Shanghai) Co., Ltd.

Air Intake Emergency Shut-Off Valve

紧急进气关断阀

FZV series valve Diagram FZV 系列阀示意图



雨凡机械科技（上海）有限公司
Yufan Machinery Technology(Shanghai) Co., Ltd.

Air Intake Emergency Shut-Off Valve

紧急进气关断阀

FSV series specifications

FSV 系列性能参数

Valve 阀参数	
Maximum Inlet Boost Air Pressure(gauge) 最大增压进气压力（表压）：	3.45 bar [50 psig]
Continuous Inlet Air Temperature 连续进气温度	-55°C to +200°C [-40°F to +392°F]
Ambient Temperature Range 环境温度范围	-40°C to +120°C[-40°F to +248°F]
Resting Position 静止位置	Valve open 阀打开
Activated Position 激活位置	Valve closed 阀关闭
Standard Mounting Flanges 标准安装法兰	Hose to Hose 软管对软管
Pipe Sizes Supported 口径范围	Ø38mm to Ø203mm [Ø1.5 in to Ø8 in]

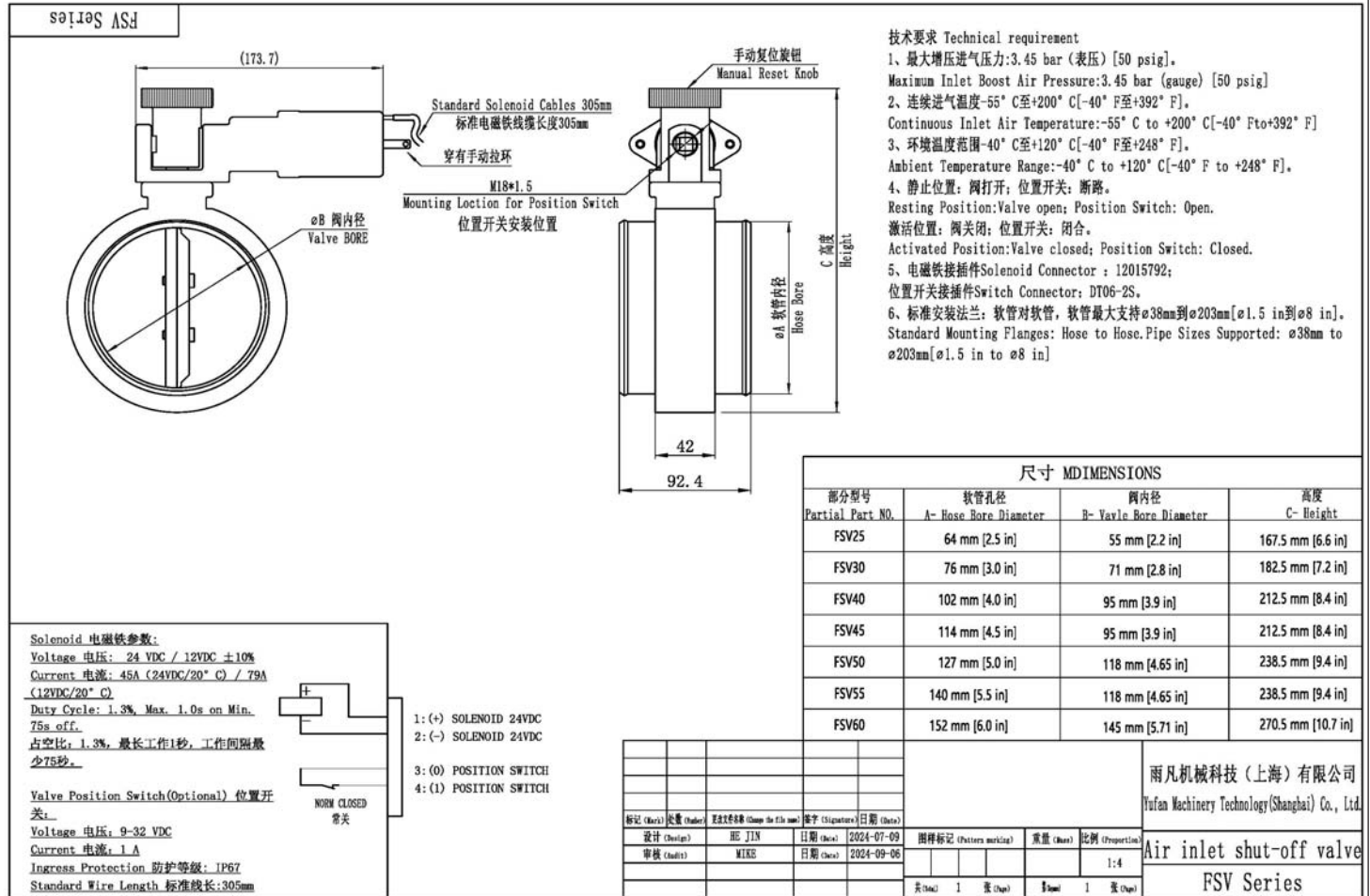


雨凡机械科技（上海）有限公司
Yufan Machinery Technology(Shanghai) Co., Ltd.

Air Intake Emergency Shut-Off Valve

紧急进气关断阀

FSV series valve Diagram FSV 系列阀示意图



FELICIA

雨凡机械科技(上海)有限公司
Yufan Machinery Technology(Shanghai) Co., Ltd.

Air Intake Emergency Shut-Off Valve

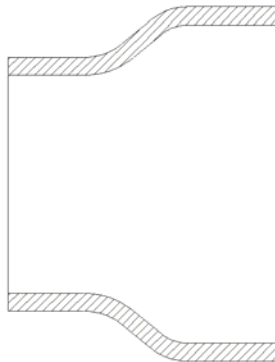
紧急进气关断阀

FSV series FELICIA Accessories FSV 系列配件

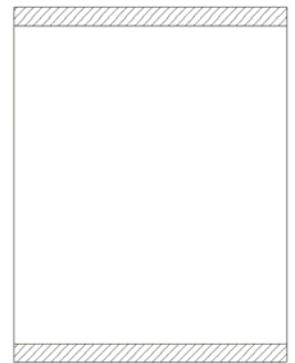
Hoses 胶管



Reducer
变径胶管



Hose
胶管



The Color of hoses may be different with the picture.
胶管颜色可能与图片不同。

Description 描述	Silicone Class “A”, 4 Ply Polyester Reinforced 有机硅胶“A”级，4 层聚酯增强
Ambient Temperature Range 环境温度范围	-50°C to +200°C [-58°F to +392°F]
Pressure Rating 压力等级	Conforms to SAE J20 (20R1 HD SW) 符合 SAEJ20(20R1HD SW)标准
Optional 可选项	Customize rubber hoses according to the site 根据现场定制胶管



雨凡机械科技（上海）有限公司
Yufan Machinery Technology(Shanghai) Co., Ltd.

Air Intake Emergency Shut-Off Valve

紧急进气关断阀

维护及维修

我们致力于为所销售的产品提供源自原厂的专业维修服务。每一项维修作业皆在我们专属的工厂内，由资历深厚、技术娴熟的专业人员精心开展。我们绝不只是简单地替换受损的零件，而是会对所有零件予以详尽检查，并向客户呈上最为优化的维修提议。不仅如此，我们更会将产品实施严格检测，全力确保其能够达成所需的功能要求。

We are committed to providing professional repair services from the original factory for the products we sell. Every maintenance task is carefully carried out by experienced and skilled professionals in our exclusive factory. We will not simply replace damaged parts, but will conduct a thorough inspection of all parts and provide customers with the most optimized repair proposals. Not only that, we will also conduct strict testing on our products to ensure that they meet the required functional requirements.

证书及荣誉



雨凡机械科技（上海）有限公司
Yufan Machinery Technology(Shanghai) Co., Ltd.